



Image above shows Slim seat

Toilet seat options



Slim (20mm lid)



Deluxe (40mm lid)



Classic (40mm lid)

Slim and Deluxe seats (UF)

- Thermoset (UF), premium quality
- Easy to clean, anti-scratch
- Rigid, ceramic-like finish

Classic seat (PP)

- Thermoplastic (PP)
- Lightweight, durable
- Gloss finish, easy to clean

Floor mount toilet suite – Clean Flush, Nanoglaze

Sleek style and efficient performance in a premium space-saving toilet system with hidden cistern and pneumatic flush.

Pan – details:

- Stylish minimalist design with curved pan, sits flat against wall
- Clean Flush rimless pan design for an efficient, powerful flush
- White vitreous china with nanoglaze surface, easy to clean
- Quick release seat with stainless steel pins
- Soft closing seat
- Setout range 90-120
- Suitable for S or P trap

In-wall cistern – details:

- Hidden cistern activated through a premium pneumatic system connected to the flush plate buttons
- Fully insulated with anti-condensation foam to prevent moisture escape
- Easy to install and service through the flush plate
- WELS 4 star 4.5/3L water saving flush

ORDER CODE INWALL TOILET SUITE — includes pan, seat and standard in-wall cistern (C100)

STO-306-10	Pan with Slim seat (UF) and C100 cistern
STO-306-13	Pan with Deluxe seat (UF) and C100 cistern
STO-306-11	Classic seat (PP) and C100 cistern

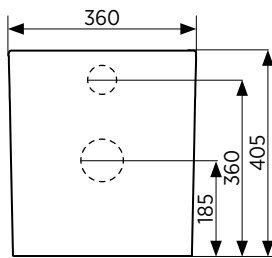
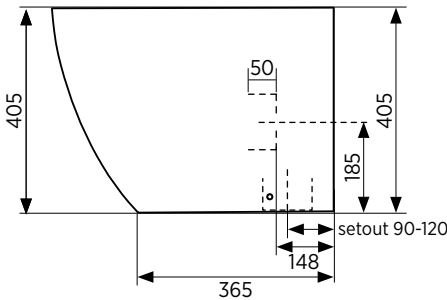
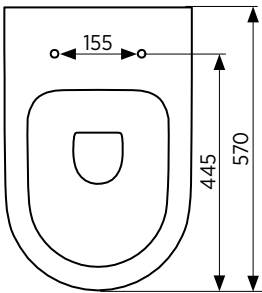
Note: Undercounter cistern is available on request.

PAN AND SEAT ONLY

STO-306-00	Pan with Slim seat (UF)
STO-306-04	Pan with Deluxe seat (UF)
STO-306-01	Pan with Classic seat (PP)

BUTTONS Order flush buttons separately. Select from the full range of Seima flush buttons.

PAN	Wall faced with rimless Clean Flush pan design.
MATERIAL	White vitreous china.
TRAPS	Universal trap, suitable for S or P trap installations.
SEAT	Quick release seat with stainless steel hinges, soft closing. Three seat styles available.
SETOUT	Variable 90-120 mm using supplied connector.
FIXING	Pan may be bedded with cement base or using silicone sealant.



Rimless Clean Flush pan design – for an efficient, powerful flush



Nanoglaze surface – ultra-smooth and anti-bacterial, easy to clean

SEIMA

bathroom | kitchen | laundry

seima.com.au

Please note

- Installation shall be in accordance with AS/NZS3500.
- All measurements are in millimetres. Height dimensions are to base of pan. Make allowance for bedding.
- Bedding: Fix pan to floor using a sand cement mixture of 3:1 to a depth of 60mm. Do not use lime or fast-drying cement.
- Bracket fixing: The pan should be bedded with an acetic cured silicone sealant and fixed with the brackets supplied.
- Dimensions are nominal and subject to normal ceramic manufacturing variations.
- Specifications may vary without notice as part of our continuous improvement practices.
- Clean with a damp cloth. Do not use abrasive cleaners, liquids or pastes.

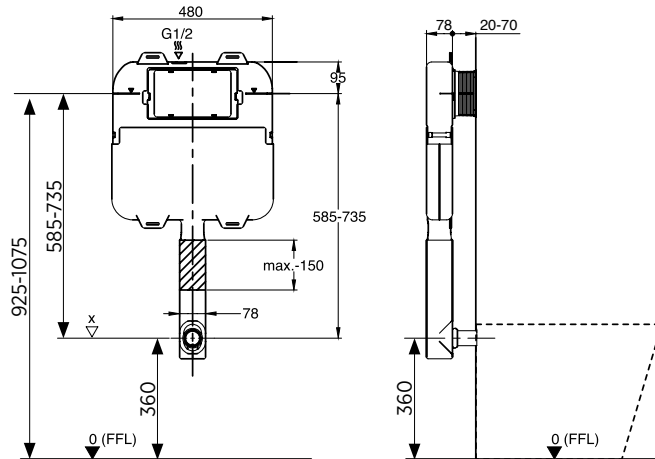
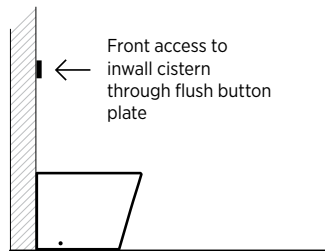
STO-306 PAN + SLIM CISTERN **STO-C100** (installation TYPE A)

A

INSTALLATION TYPE A

Cistern code: STO-C100

Floor mount pan + Slim cistern



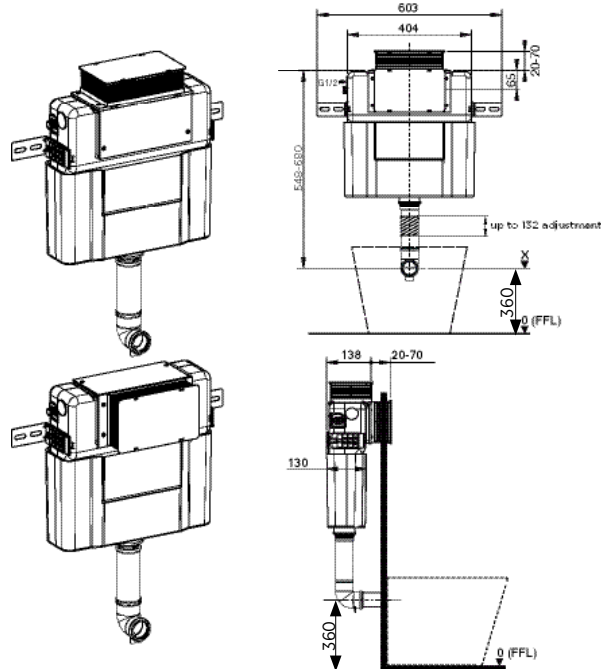
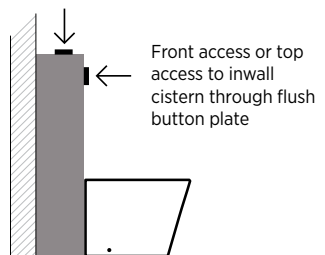
STO-306 PAN + UNDERCOUNTER CISTERN **STO-C101** (installation TYPE C)

C

INSTALLATION TYPE C

Cistern code: STO-C101

Floor mount pan + Undercounter cistern



SEIMA

bathroom | kitchen | laundry

seima.com.au

Please note

- Installation shall be in accordance with AS/NZS3500.
- All measurements are in millimetres. Height dimensions are to base of pan. Make allowance for bedding.
- Bedding: Fix pan to floor using a sand cement mixture of 3:1 to a depth of 60mm. Do not use lime or fast-drying cement.
- Bracket fixing: The pan should be bedded with an acetic cured silicone sealant and fixed with the brackets supplied.
- Dimensions are nominal and subject to normal ceramic manufacturing variations.
- Specifications may vary without notice as part of our continuous improvement practices.
- Clean with a damp cloth. Do not use abrasive cleaners, liquids or pastes.